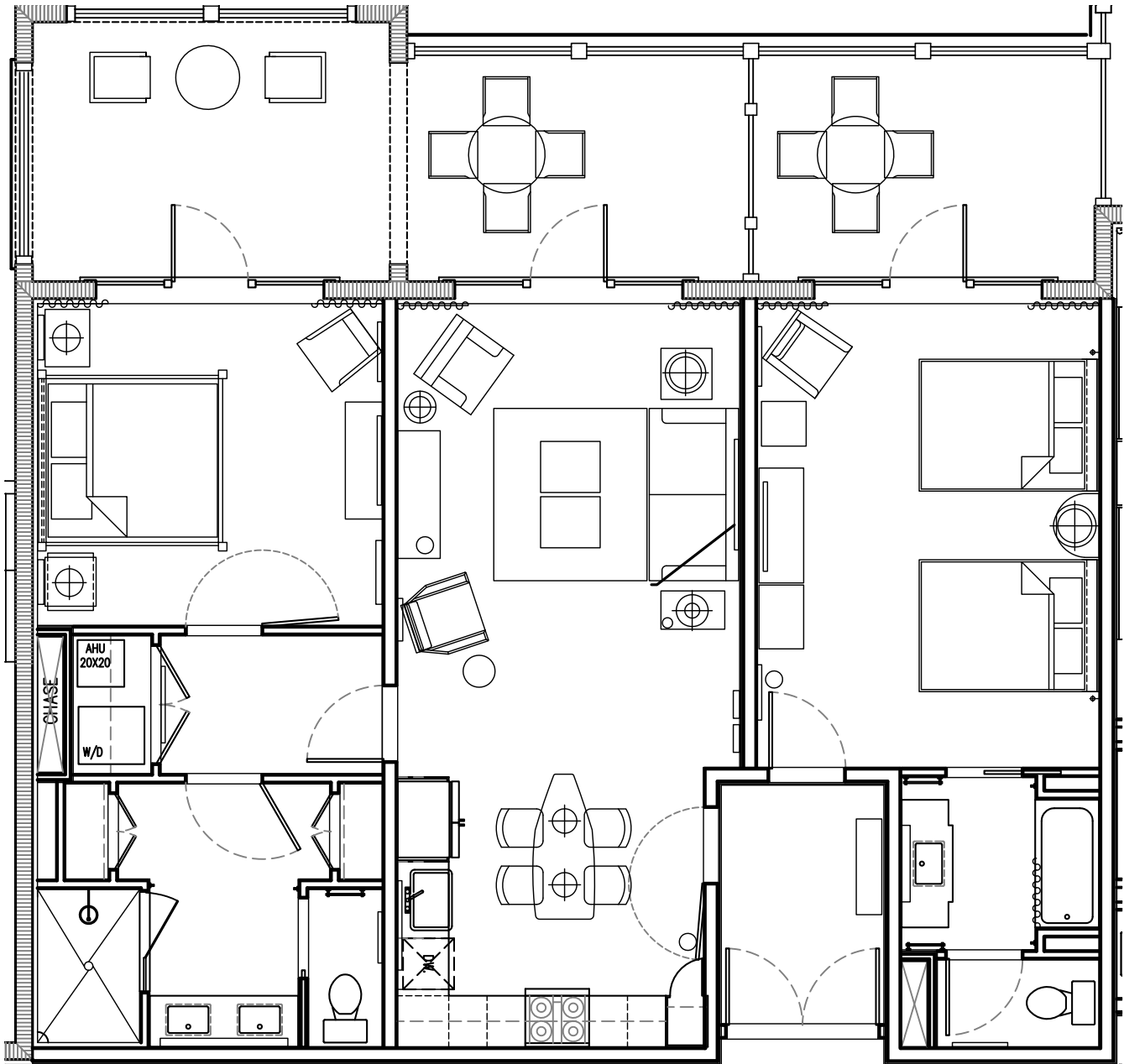


WATERLINE

VILLAS & MARINA

LODGE BUILDING | FLOORS 2 & 3



Typical Furniture Plan

2-Bedroom: QQ / K

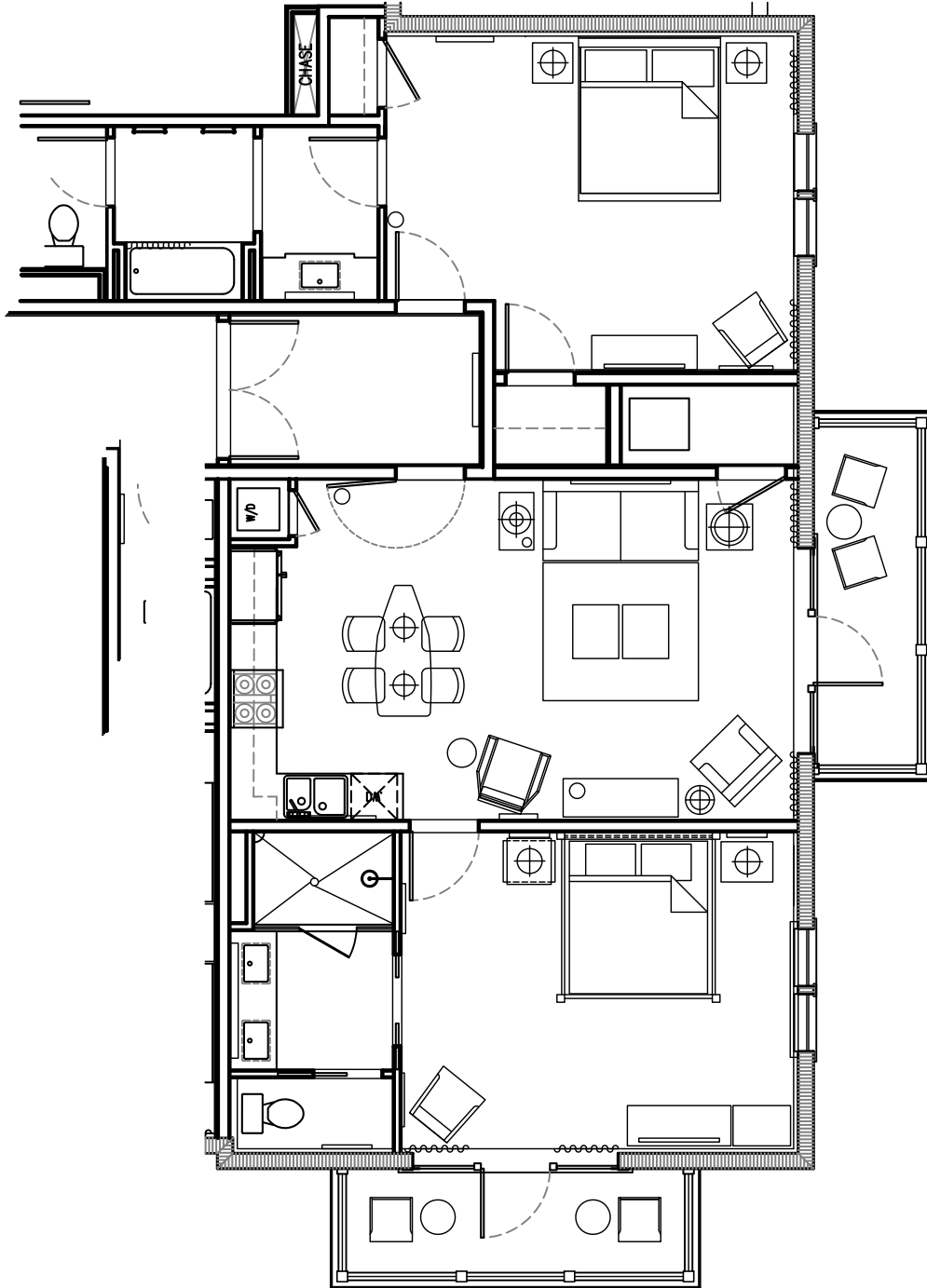
1

Units: 6
124, 126, 128
134, 136, 138

WATERLINE

VILLAS & MARINA

LODGE BUILDING | FLOORS 2 & 3



Typical Furniture Plan
2-Bedroom: K / K End Unit

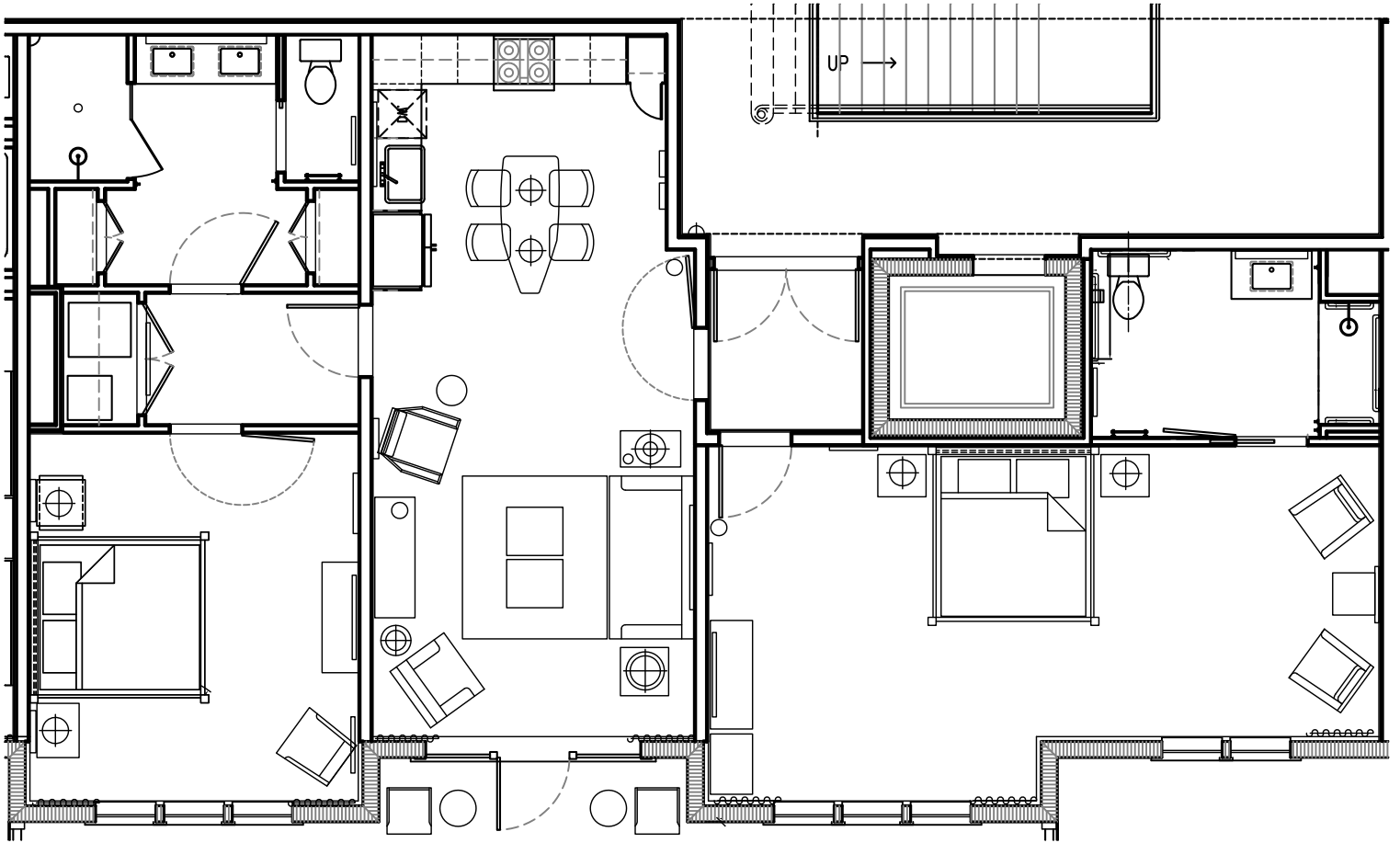
2

Units: 2
121, 131

WATERLINE

VILLAS & MARINA

LODGE BUILDING | FLOORS 2 & 3



Typical Furniture Plan 2-Bedroom: K / K

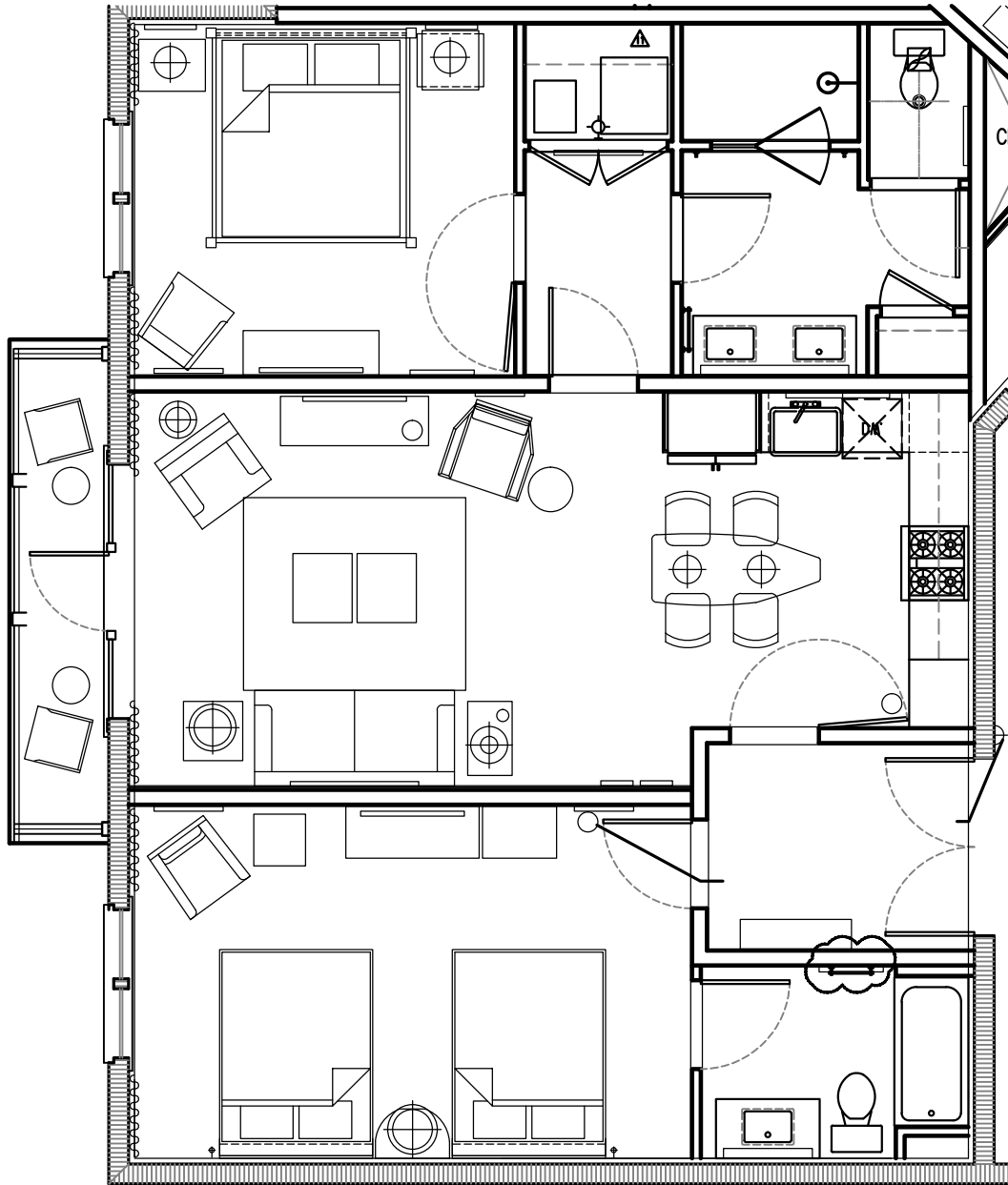
3

Units: 2
125, 135

WATERLINE

VILLAS & MARINA

LODGE BUILDING | FLOORS 2 & 3



Typical Furniture Plan

2-Bedroom: QQ / K

4

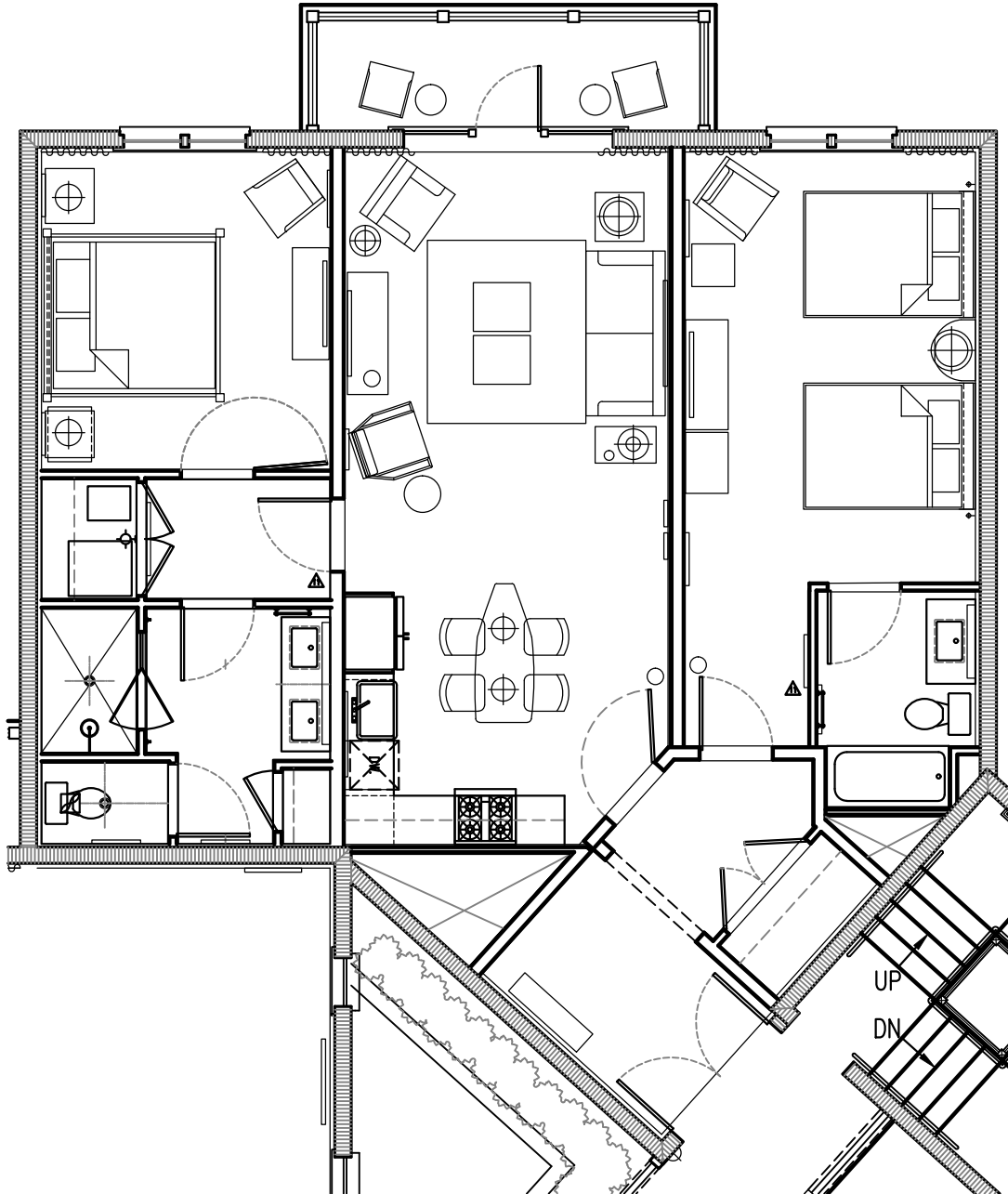
Units: 4

123, 127, 133, 137

WATERLINE

VILLAS & MARINA

BAY BUILDING | FLOORS 2 & 3



Typical Furniture Plan

2-Bedroom: QQ / K

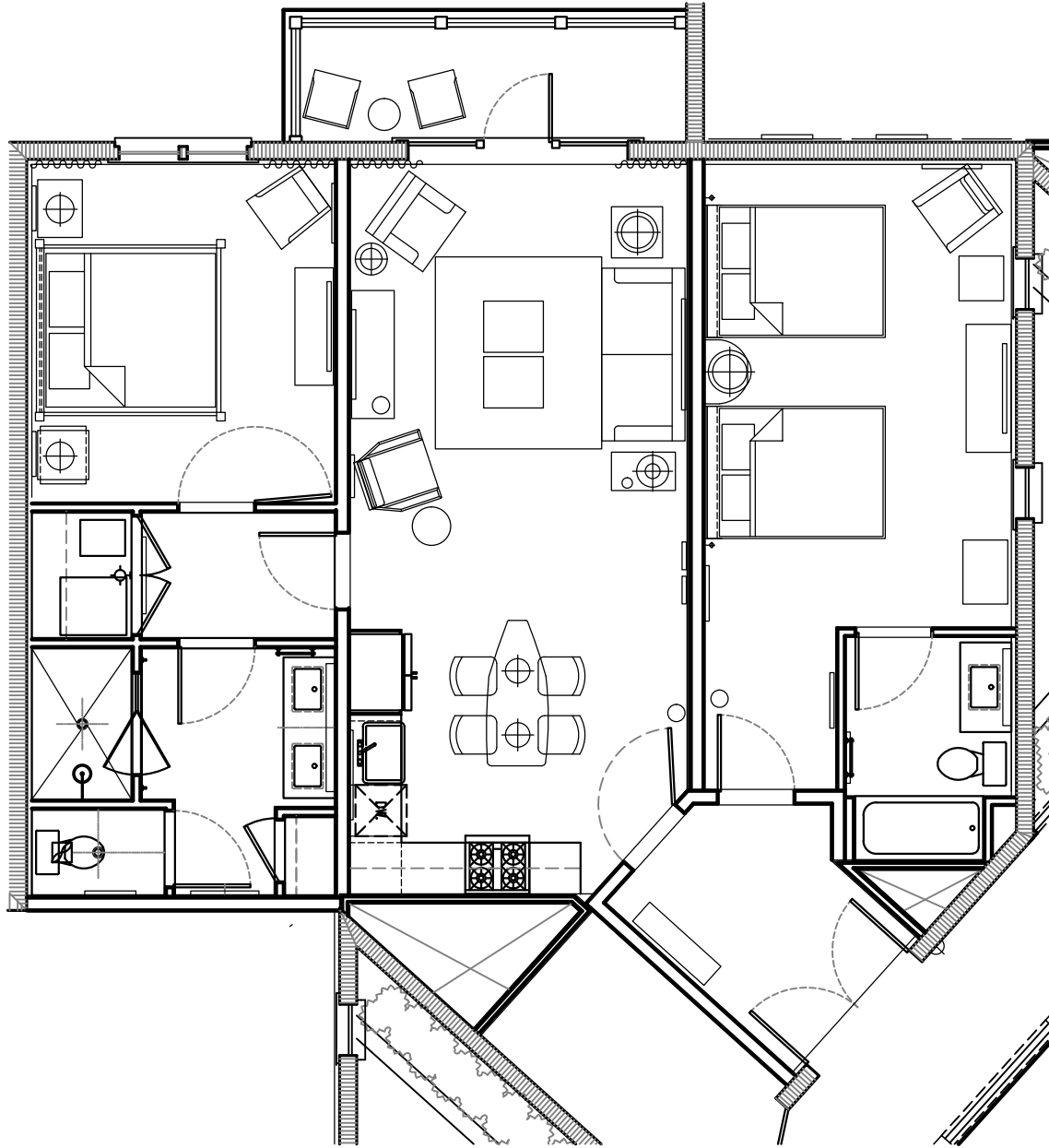
1

Units: 2
324, 334

WATERLINE

VILLAS & MARINA

BAY BUILDING | FLOORS 2 & 3



Typical Furniture Plan

2-Bedroom: QQ / K

2

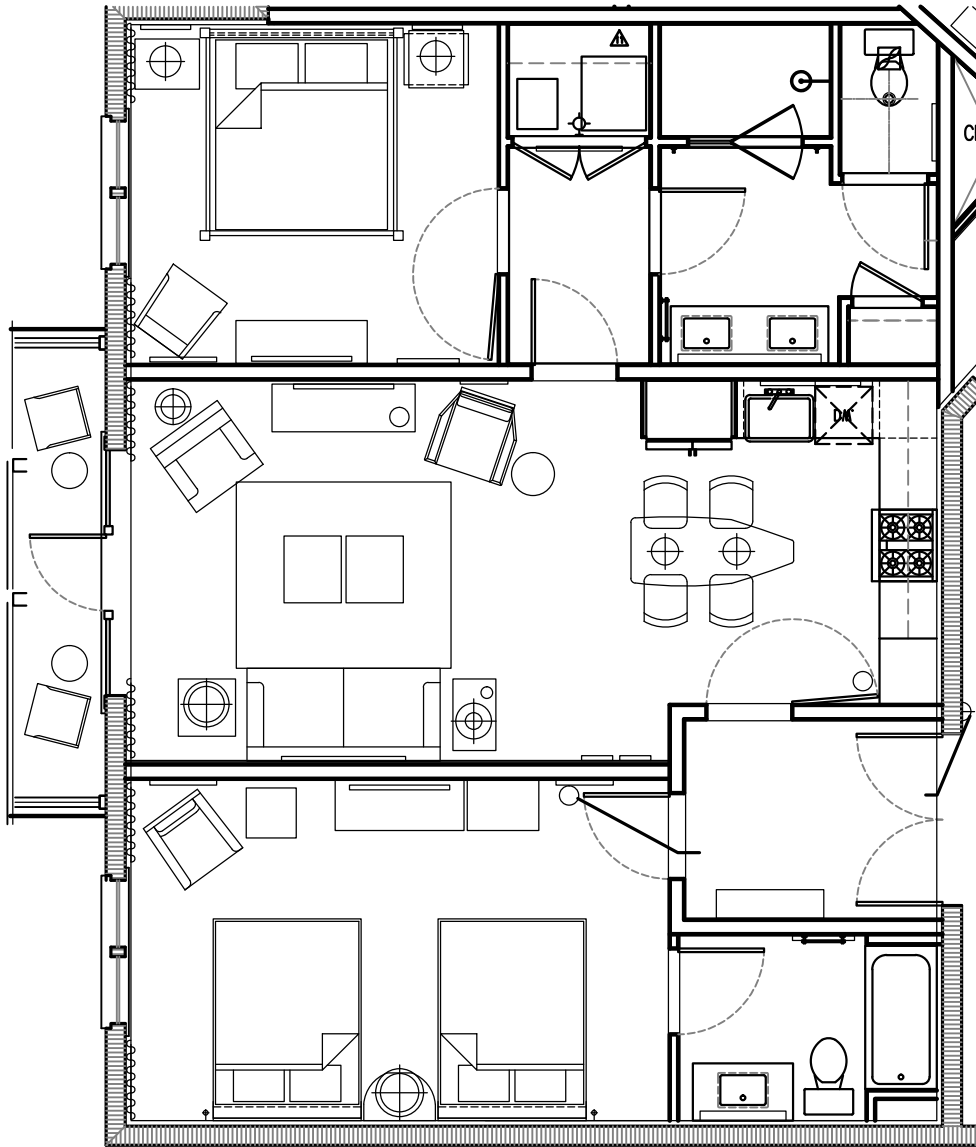
Units: 4

322, 323, 332, 333

WATERLINE

VILLAS & MARINA

BAY BUILDING | FLOORS 2 & 3



Typical Furniture Plan
2-Bedroom: QQ / K

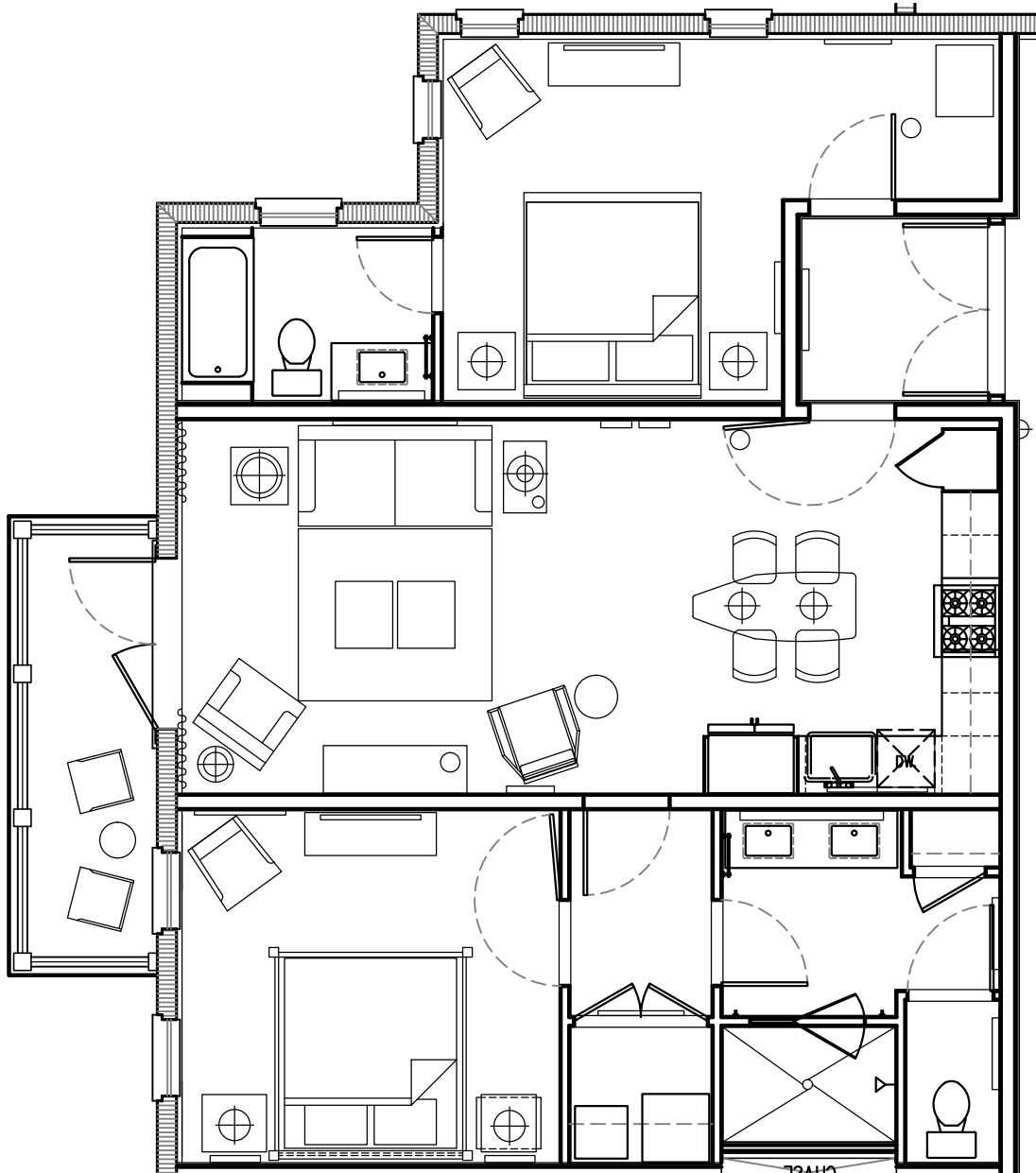
3

Units: 2
321, 331

WATERLINE

VILLAS & MARINA

MARINA BUILDING | FLOORS 2 & 3



Typical Furniture Plan

2-Bedroom: K / K

1

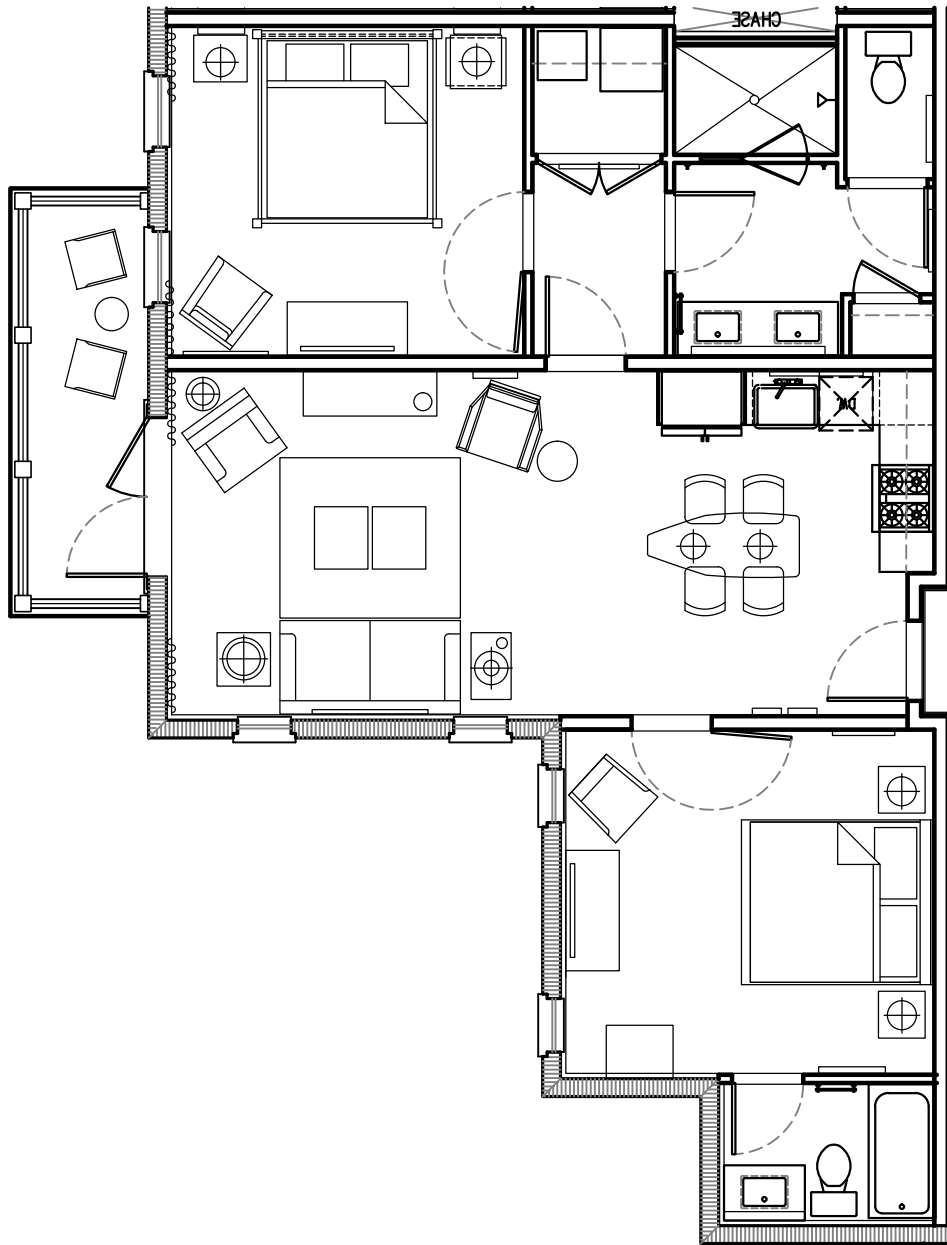
Units: 4

223, 224, 233, 234

WATERLINE

VILLAS & MARINA

MARINA BUILDING | FLOORS 2 & 3



Typical Furniture Plan

2-Bedroom: K / K

2

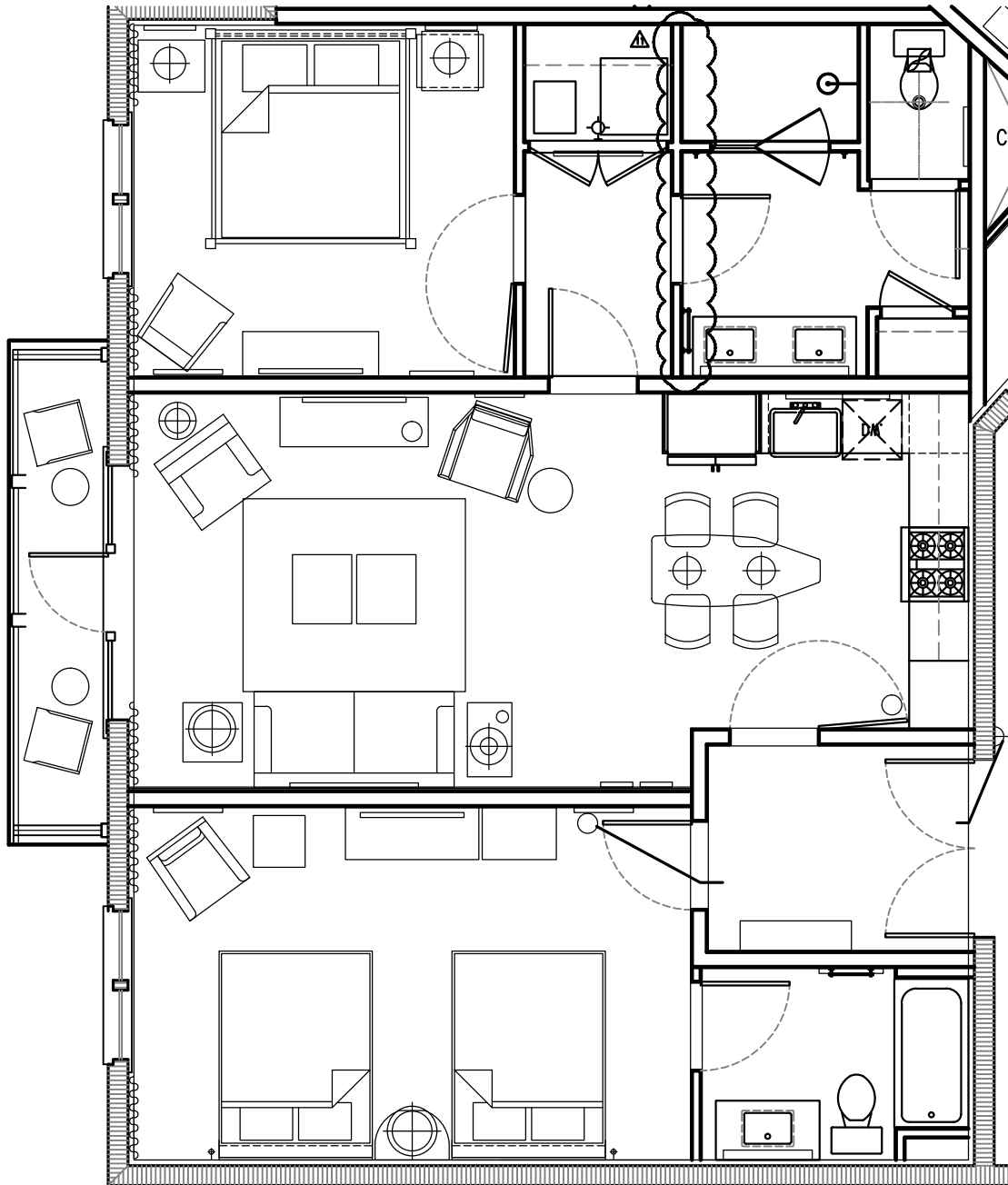
Units: 4

221, 231, 222, 232

WATERLINE

VILLAS & MARINA

ISLAND BUILDING | FLOORS 2 & 3



Typical Furniture Plan

2-Bedroom: QQ / K

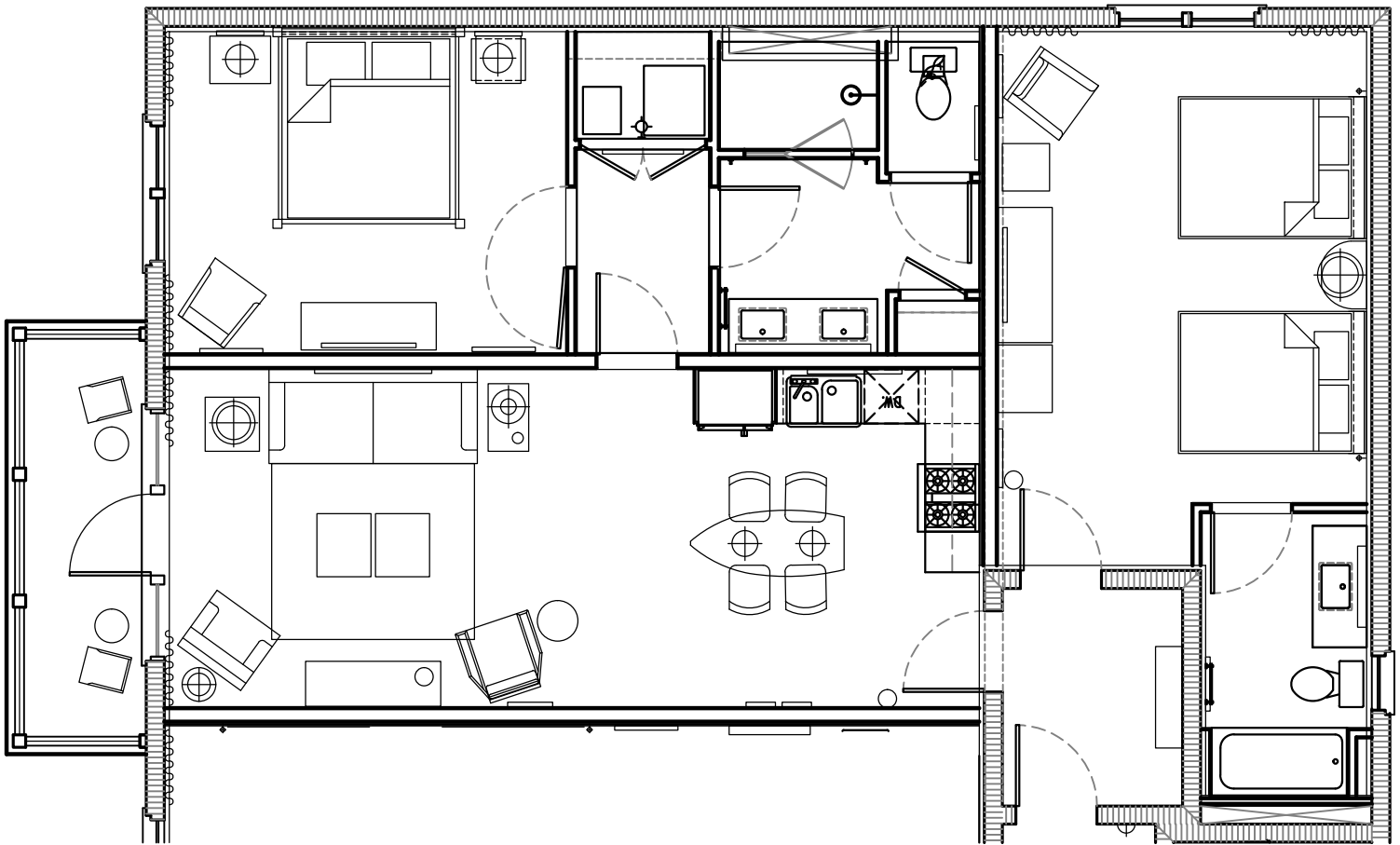
1

Units: 2
422, 433

WATERLINE

VILLAS & MARINA

ISLAND BUILDING | FLOORS 2 & 3



Typical Furniture Plan

2

2-Bedroom: QQ / K

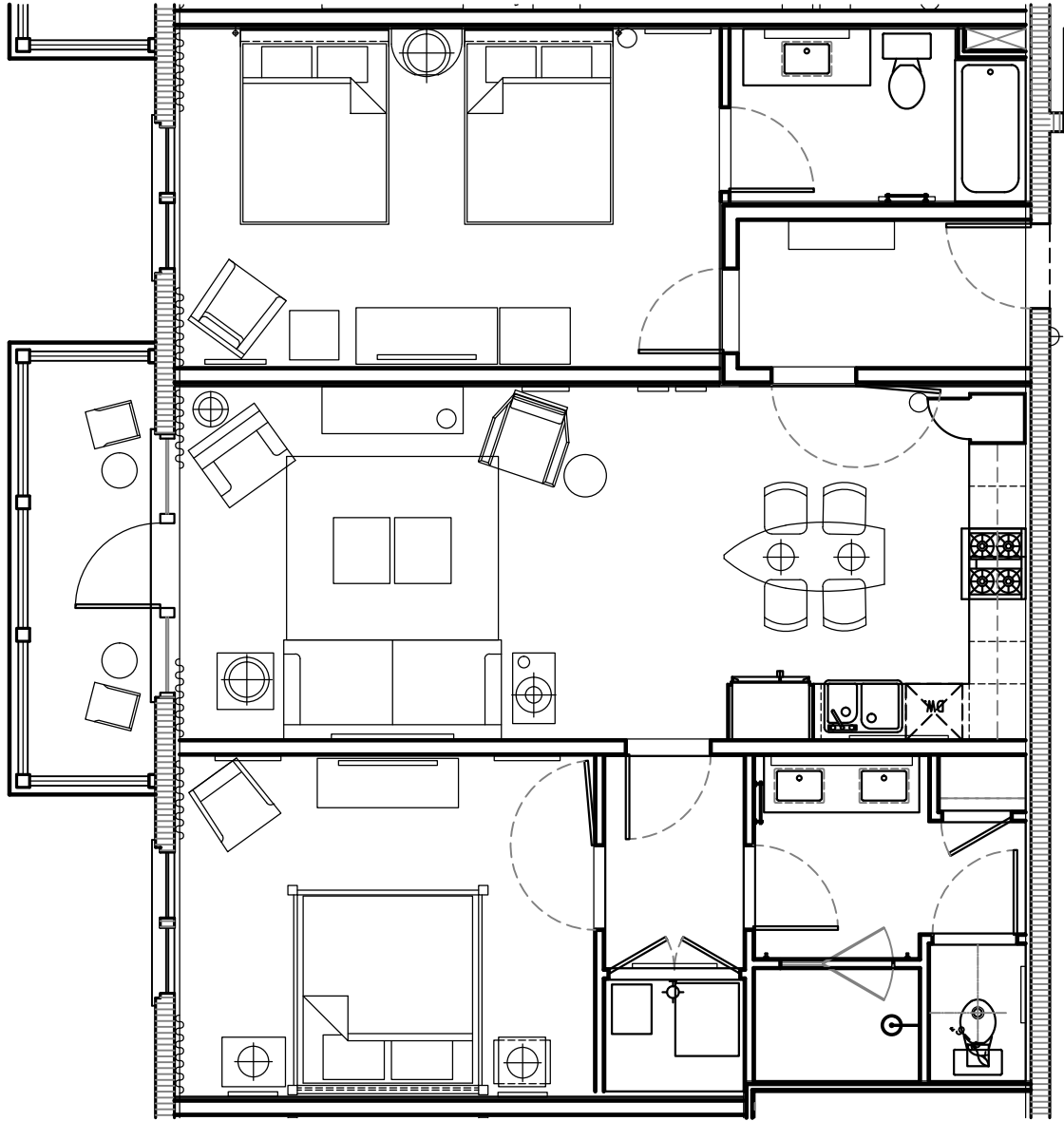
Units: 3

421, 424, 431

WATERLINE

VILLAS & MARINA

ISLAND BUILDING | FLOORS 2 & 3



Typical Furniture Plan 2-Bedroom: QQ/ K

3

Units: 2
423, 433